

标准泵系列
STANDARD PUMP SERIES

标准泵系列
STANDARD PUMP SERIES

PD系列-计量药泵
PD SERIES-DOSING PUMP

计量精度 / Measurement accuracy: <1%
流量范围 / Capacity range: 0.1-250 l/h
压力范围 / Pressure range: 0-24 bar



PF系列-矩形接口泵
PF SERIES-HOPPER PUMP

流量范围 / Capacity range: 0.5-120 m³/h
压力范围 / Pressure range: 0-24 bar

PN系列-通用型泵
PN SERIES-GENERAL PUMP

流量范围 / Capacity range: 0.5-300m³/h
压力范围 / Pressure range: 0-24 bar

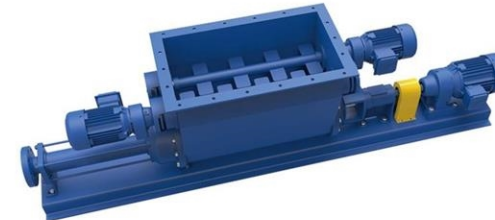


PSF系列-带轴承座矩形接口泵
PSF SERIES-BEARINGHOUSE & HOPPER PUMP

流量范围 / Capacity range: 0.5-120 m³/h
压力范围 / Pressure range: 0-48 bar

PSN系列-带轴承座结构泵
PSN SERIES-BEARING HOUSE PUMP

流量范围 / Capacity range: 0.5-150m³/h
压力范围 / Pressure range: 0-48 bar

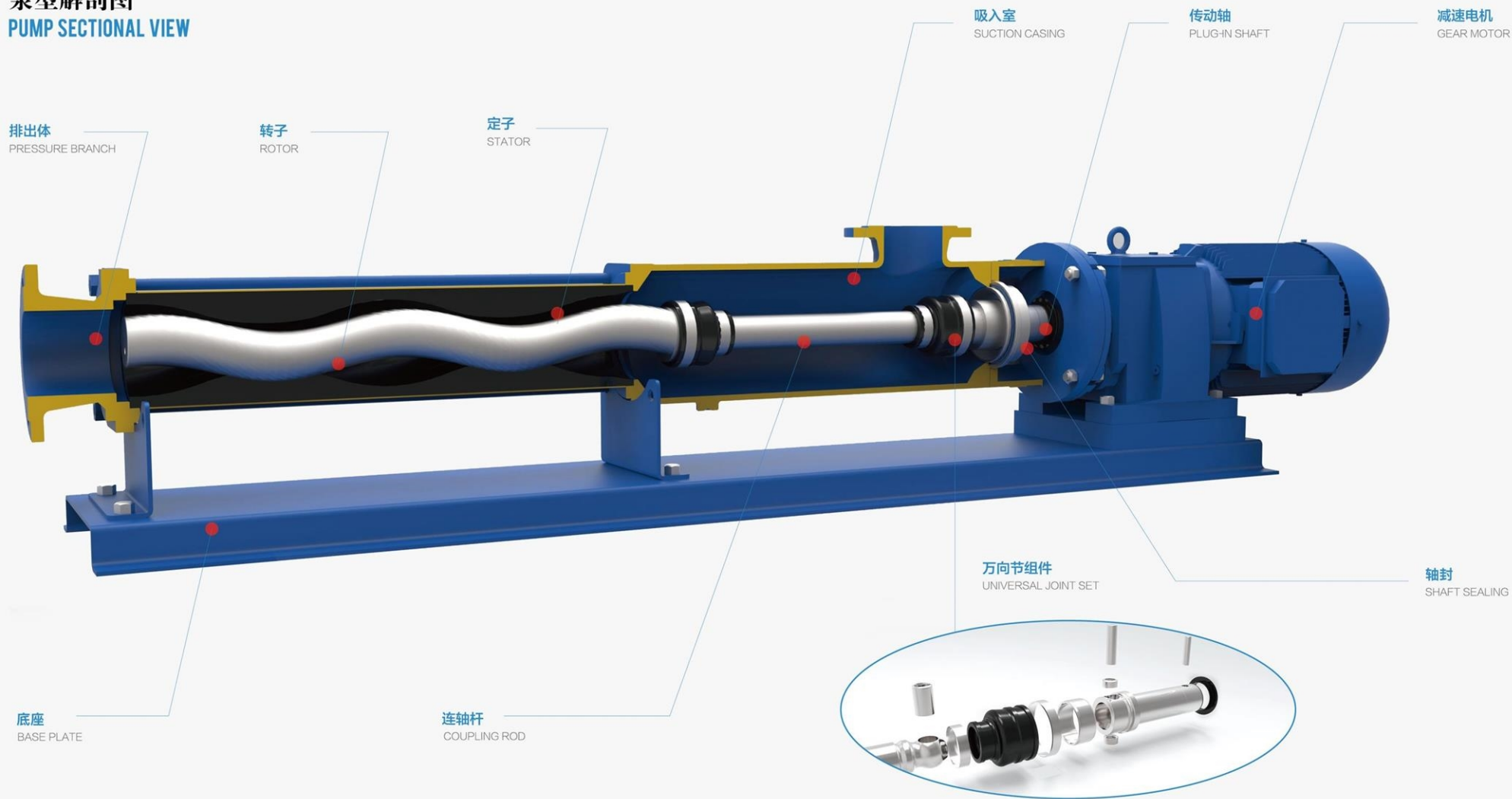


PSP系列-带破桥装置泵
PSP SERIES-BRIDGEBREAKER PUMP

流量范围 / Capacity range: 0.5-60 m³/h
压力范围 / Pressure range: 0-48 bar



泵型解剖图 PUMP SECTIONAL VIEW





标准泵系列 STANDARD PUMP SERIES

PH系列-立式泵 PH SERIES - VERTICAL PUMP

流量范围 / Capacity range: 0.5-120 m³/h
压力范围 / Pressure range: 0-12 bar



PZ系列-食品卫生泵 PZ SERIES - FOOD HYGIENE PUMP

流量范围 / Capacity range: 0.5-50 m³/h
压力范围 / Pressure range: 0-24 bar



PDJ系列-点胶泵 PDJ SERIES - ADHESIVE PUMP

计量精度 / Measurement accuracy: <1%
流量范围 / Capacity range: 0.02-50 ml/r
压力范围 / Pressure range: 0-18 bar



型号定义 MODEL DESCRIPTION

P N 10 - 1 L C 1 R M



密封形式 / Seal type: M/机封Machinery seal; P/填料 Packing seal
定子材质 / Stator material: R/NBR; E/三元乙丙 EPDM; F/FKM; H/H-NBR
转动部件材质 / RTE material: 1/工具钢tool steel; 2/304; 3/316L; 4/双向不锈钢DSS
泵体材质 / Pump body material: C/碳钢 iron steel; S/不锈钢Stainless steel
转子 / 定子几何级数: Rotor / stator shape: L, S, P, D
泵级数 / Pump stage: 1, 2, 3, 4, 6, 8
型号: Model
泵系列 / Pump series: N, SN, F, SF, SP, D, Z, DJ,

单螺杆泵转子/定子几何体及螺距介绍:

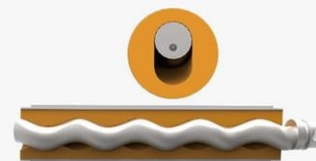
L型 / L type

单头 / 长螺距
single head / long pitch



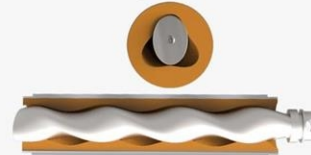
S型 / S type

单头 / 短螺距
single head / short pitch



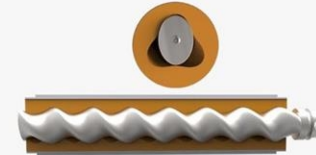
P型 / P type

双头 / 长螺距
double heads / short pitch



D型 / D type

双头 / 短螺距
double heads / Short pitch





材质介绍

MATERIAL INTRODUCTION

螺杆泵橡胶部件材质介绍/Rubber Material Information

| 材质/Material | 耐腐蚀性/Corrosion Resistance | 耐溶胀/Swelling Resistance | 耐磨性/Wear Resistance | 耐温范围/Temperature Range |
|-------------|---------------------------|-------------------------|---------------------|------------------------|
| 丁腈橡胶/NBR | 一般/OK | 好/Good | 好/Good | 110°C |
| 三元乙丙橡胶/EPDM | 好/Good | 差/Bad | 好/Good | 120°C |
| 氟橡胶/KFM | 很好/Very Good | 很好/Very Good | 一般/OK | 180°C |
| 氯化丁腈橡胶/HNBR | 很好/Very Good | 好/Good | 好/Good | 170°C |
| 聚四氟乙烯/PTFE | 很好/Very Good | 很好/Very Good | 差/Bad | 230°C |

螺杆泵金属部件材质介绍/Metal material Information

| 材质/Material | 耐腐蚀性/Corrosion Resistance | 耐磨性/Wear Resistance |
|-----------------------|---------------------------|---------------------|
| 合金钢+镀硬铬/Tool Steel+CP | 好/Good | 很好/Very Good |
| 不锈钢/SS304 | 好/Good | 好/Good |
| 不锈钢/SS316 | 很好/Very Good | 好/Good |
| 不锈钢304+镀硬铬/SS304+CP | 好/Good | 很好/Very Good |
| 不锈钢316+镀硬铬/SS316+CP | 好/Good | 很好/Very Good |
| 双相不锈钢 /DSS | 非常好/Excellent | 好/Good |
| 双相不锈钢+镀硬铬/DSS+CP | 非常好/Excellent | 好/Good |

整机配置说明/ Whole Set Pump Description

| 序号 | 名称/Name | 备注/Remak |
|----|-------------------|-----------------------------------------|
| 1 | 定子 Stator | NBR, EPDM, KFM, HNBR, PTFE |
| 2 | 转子 Rotor | SS304, SS316L, 双相不锈钢DSS, 合金钢 Tool Steel |
| 3 | 连接杆 Coupling Rod | SS304, SS316L, 双相不锈钢DSS, 合金钢 Tool Steel |
| 4 | 传动轴 Plug-in Shaft | SS304, SS316L, 双相不锈钢DSS, 合金钢 Tool Steel |
| 5 | 密封 Sealing | 机械密封/Machinery Seal, 填料密封/Packing Seal |
| 6 | 减速电机 Gear Motor | 诺德电机或瑞德森等 NORD or XL-MOTOR etc. |

如果您对于定子, 转子材质有特殊要求, 或您对实际工况不确定选用什么材质, 请联系我们。

If you have special material requirement of stator and rotor, or you have no idea about what material suit for you, don't hesitate to contact us.

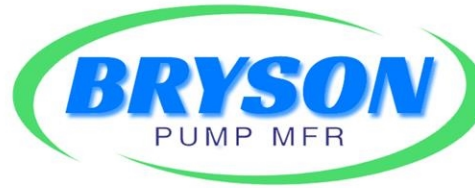
螺杆泵流量选型表

SELECTION DATA

| 泵型号 Pump Type | 压力范围 Pressure Range (bar) | 流量范围 Capacity Range (m ³ /h) | 转速范围 Speed Range (rpm) | 进口尺寸 Inlet Size (G/DN) | 出口尺寸 Outlet Size (G/DN) | 电机功率 Motor Power (KW) |
|------------------|---------------------------------|-----------------------------------------------|------------------------------|------------------------------|-------------------------------|-----------------------------|
| PN025-2S | 0-12 | 0-0.25 | 0-350 | G1½ | G1½ | 0.37 |
| PN05-1L | 0-6 | 0-0.5 | 0-350 | G1½ | G1½ | 0.37 |
| PN05-2S | 0-12 | 0-0.5 | 0-350 | G1½ | G1½ | 0.75 |
| PN1-1L | 0-6 | 0-1 | 0-350 | G1½ | G1½ | 0.75 |
| PN1-2S | 0-12 | 0-1 | 0-350 | 50 | 50 | 1.5 |
| PN1-4S | 0-24 | 0-0.5 | 0-250 | 50 | 50 | 3 |
| PN3-1L | 0-6 | 0-3 | 0-350 | 50 | 50 | 2.2 |
| PN3-2S | 0-12 | 0-2.5 | 0-350 | 65 | 65 | 3 |
| PN3-4S | 0-24 | 0-1.5 | 0-250 | 65 | 65 | 5.5 |
| PN5-1L | 0-6 | 0-5 | 0-320 | 65 | 65 | 3 |
| PN5-2S | 0-12 | 0-5 | 0-320 | 80 | 80 | 4 |
| PN5-3S | 0-18 | 0-3 | 0-250 | 80 | 80 | 5.5 |
| PN5-4S | 0-24 | 0-2 | 0-200 | 80 | 80 | 7.5 |
| PN10-1L | 0-6 | 0-10 | 0-300 | 80 | 80 | 4 |
| PN10-2S | 0-12 | 0-7 | 0-300 | 80 | 80 | 5.5 |
| PN10-3S | 0-18 | 0-6 | 0-250 | 80 | 80 | 7.5 |
| PN10-4S | 0-24 | 0-4 | 0-200 | 80 | 80 | 11 |
| PN15-1L | 0-6 | 0-15 | 0-300 | 80 | 80 | 5.5 |
| PN15-2S | 0-12 | 0-12 | 0-300 | 100 | 100 | 7.5 |
| PN15-3S | 0-18 | 0-10 | 0-250 | 100 | 100 | 11 |
| PN15-4S | 0-24 | 0-7 | 0-200 | 100 | 100 | 15 |
| PN25-1L | 0-6 | 0-25 | 0-280 | 100 | 100 | 7.5 |
| PN25-2S | 0-12 | 0-22 | 0-300 | 125 | 125 | 11 |
| PN25-3S | 0-18 | 0-15 | 0-250 | 125 | 125 | 15 |
| PN25-4S | 0-24 | 0-12 | 0-200 | 125 | 125 | 18.5 |
| PN50-1L | 0-6 | 0-50 | 0-280 | 125 | 125 | 11 |
| PN50-2S | 0-12 | 0-35 | 0-250 | 150 | 150 | 22 |
| PN50-3S | 0-18 | 0-30 | 0-230 | 150 | 150 | 30 |
| PN50-4S | 0-24 | 0-26 | 0-200 | 150 | 150 | 37 |
| PN80-1L | 0-6 | 0-80 | 0-280 | 150 | 150 | 22 |
| PN80-2S | 0-12 | 0-60 | 0-280 | 150 | 150 | 37 |
| PN80-3S | 0-18 | 0-42 | 0-200 | 150 | 150 | 45 |
| PN80-4S | 0-24 | 0-25 | 0-150 | 150 | 150 | 55 |
| PN120-1L | 0-6 | 0-120 | 0-250 | 150 | 150 | 37 |
| PN120-2S | 0-12 | 0-100 | 0-270 | 200 | 200 | 45 |
| PN120-3S | 0-18 | 0-60 | 0-180 | 200 | 200 | 55 |
| PN120-4S | 0-24 | 0-50 | 0-150 | 200 | 200 | 55 |
| PN180-1L | 0-6 | 0-180 | 0-220 | 200 | 200 | 45 |
| PN180-2S | 0-12 | 0-170 | 0-220 | 200 | 200 | 55 |
| PN300-1L | 0-6 | 0-300 | 0-220 | 200 | 200 | 55 |

以上流量以20摄氏度清水为参考, 泵的流量与压力在额定转速下成正比关系, 最高压力可达到48bar或更高, 具体需求和与我们联系。

Above data is for pure water at 20 °C, the capacity and pressure is proportional to the rated speed. The pressure can reach or above 48 bar, if you have special requirement, don't hesitate to contact us.



APPLICATIONS & SOLUTIONS



SLUDGE TREATMENT AND ENVIRONMENTAL ENGINEERING

● 污水环处理和环境工程

可输送原生污泥, 稠泥, 脱水污泥, 电解质, 废气处理污水, 石膏
convey primary sludge, secondary sludge, thickened sludge,
watered sludge, polyelectrolyte, alum, flue gas cleaning-waste water, gypsum,
slurries



PULP AND PAPER WOOD

● 造纸和木材加工

用来输送乳胶, 石灰浆, 纤维素, 添加剂, 淀粉, 钛白粉, 明矾, 水玻璃, 苏达, 胶水
convey latex, lime, paper suspension, cellulose additives,
starch, TiO₂, Titan-Dioxide, alum, water glass, soda, glue



FOOD INDUSTRY

● 食品行业

用来输送面团, 棕榈油, 橄榄油, 冰激凌, 果酱, 蜂蜜, 肉酱, 香肠, 土豆渣, 焦糖, 软糖,
芥末, 番茄酱, 宠物食品
It is used to transport dough, palm oil, olive oil, ice cream, jam, honey, meat
sauce, sausage, potato dregs, caramel, fudge, mustard, tomato sauce, pet food.



PHARMACEUTICAL AND COSMETICS INDUSTRY

● 制药及化妆品行业

用来输送霜剂, 添加剂, 凝胶体, 香波, 油膏
convey cream, additives, gel, shampoo, ointments



DYE AND PAINT INDUSTRY

● 染料及油漆业

用来输送乳胶漆, 油漆, 颜料, 各种色粉, 助剂等
convey emulsion, paint, pigments, colors, additives

PETROCHEMICAL INDUSTRY

● 石化行业

主要输送原油, 润滑油, 矿物油, 淤泥, 淤泥, 焦油, 水油乳化物, 稠油, 石蜡
convey crude oil, lubricant oil, mineral oil, oil slurries,
refinery sludge, tar, additives, water-oil emulsion, heavy oil, paraffins.



WINE AND BEVERAGE

● 酿酒及饮料业

用来输送啤酒, 酒糟, 麦芽汁, 酵母, 果浆, 果汁, 浓缩饮料, 香精, 添加剂
convey beer-mash, malt grains, wort, yeas, fruit
juice, fruit mash, beverage, concentrates, flavour, additives.



CHEMICAL INDUSTRY

● 化工行业

主要用来输送各类无机酸, 碱, 添加剂, 悬浮液, 污泥等
convey acid, lye, additives, suspension, sludge



BUILDING AND MINING

● 建筑行业和采矿业

用来输送混凝土, 膨润土, 碎石, 沙子, 石灰, 石灰悬浮液
convey concrete bentonite grave and sand, plaster,
gypsum suspension.



AGRICULTURE

● 农业中输送

液体肥料, 宠物液体食品, 生物制品等
convey liquid manure, liquid pet food, biomass

